

Copyboard systems

for microfilm cameras
and book scanners



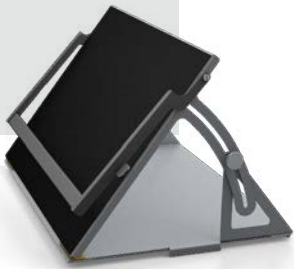
Modular, convenient

 **ZEUTSCHEL**
The Future of the Past.



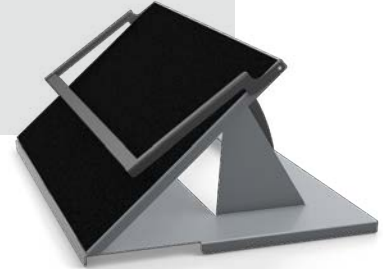
Book holders 140° - 90°

- opening angle 110°-150°
- can be used on both sides



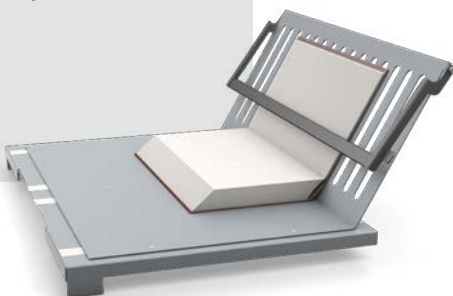
Book holders A1 140° - 90°

- opening angle 100°-140°
- can be used on both sides



Kit 90°

- opening angle 120°
- for front edge system



Kit 90° A1

- opening angle 120°
- for front edge system





Excellent digitisation begins with a suitable copyboard system

For digitisation or analog storage of sensitive and often irreplaceable cultural assets, a technically-sophisticated scan and microfilm system is needed which should be as easy as possible to use.

In addition, excellent long-term storage begins with a compatible copyboard system. For this reason, for practically every piece of equipment – whether book scanners, microfilm cameras or hybrid systems – Zeuschel offers its users compatible modular copyboard systems.

We at Zeuschel have been dealing in development and construction of our copyboard systems (book cradles with or without a motor, with or without a glass place; top or backlight tables) for

more than 50 years with the same care as the development of our scanners, our software or our microfilm cameras.

As a result, you can expect the same maximum of operating comfort from the copyboard systems we have listed here and be assured that your valuable books and other documents will be treated in the exact same careful manner.

For simple, ergonomic and fatigue-free operation we have incorporated into our systems: ample leg room, height adjustment, a safe opening mechanism and a solid foot switch, for example.

You may depend on original Zeuschel quality even with copyboard systems.

Copyboard-system	Scanners/copiers													
	OS 15000		zeta	OS 14000			OS 12000				OK		Book holder	Kit 90°
	Comfort	Advanced/Advanced Plus	Comfort	TT	A1	A0	Bookcopy	Advanced	Comfort	A1	400	401	A1 140°-90°	A1
OT 180 H 35					•	•					•	•	•	•
OT 180 H A0						•					•			
OT 180					•	•					•	•		
OT 180H					•	•					•	•		•
OT 180 H 90°					•	•					•	•	•	•
OT 180 H 50					•	•					•	•		•
OT 90					•	•					•	•		
ZT					•	•					•	•		
AT 1					•	•					•	•		
AT 0						•					•			
DT 0						•					•			
Vacuum table A0						•					•			
Book holder 140°- 90°	•	•	•	•	•		•	•	•	•				
Kit 90°		•		•	•			•	•					



OT 180 H 35

Motorised book cradle with self-opening glass plate

- copyboard system with book cradle for careful handling of books
- self-opening glass plate with adjustable opening angle, adjustable up to 110°
- sufficient leg room for a comfortable working position
- foot pedal with settings for two speeds
- continuously adjustable contact pressure
- sliding, self-balancing book support plates
- easy turning of large pages, restriction for lowering for small books
- automatic lowering after capture
- thanks to open sides, the original document can be larger than the scanning surface

Technical specifications

Max. book size, opened:

1025 x 610 mm

(special model: 1025 x 700 mm)

Max. book weight: 40 kg

Max. book thickness: 350 mm

Working height: 800 mm

Electr. connection:

230V, 50/60 Hz, 500 W

w x d x h: 1180 x 780 x 800 mm



OT 180 H A0

Motorised book cradle with self-opening glass plate

- copyboard system with book cradle for careful handling of books
- self-opening glass plate
- the book is opened 180° and pressed against the glass plate from below
- continuously adjustable contact pressure
- easy turning of large pages, sufficient leg room for fast and comfortable operation using foot pedal
- automatic lowering after capture opening angle 60°

Technical specifications

Max. book size, opened:

1350 x 960 mm

Max. book weight: 22 kg

Max. book thickness: 220 mm

Working height: 860 mm

Electr. connection:

230V, 50/60 Hz, 150W,

other voltages on request

w x d x h: 1520 x 1060 x 860 mm



OT 180

Motorised book cradle

- Copyboard system with book cradle for careful handling of books
- the book is opened 180° and pressed against the glass plate from below
- easy turning of large pages, (lowering restriction for small books)
- continuously adjustable contact pressure
- sufficient leg room for fast and comfortable operation using foot pedal
- automatic lowering after capture

Technical specifications

Max. book size, opened:

1070 x 675 mm

(special model: 1070 x 700 mm)

Max. book weight: 20 kg

Max. book thickness: 240 mm

Working height: 800 mm

Electr. connection:

230V, 50/60 Hz, 150W,

other voltages on request

w x d x h: 1180 x 723 x 800 mm



OT 180 H

Motorised book cradle with self-opening glass plate

- Copyboard system with book cradle for careful handling of books with self-opening glass plate
- the book is opened 180° and pressed against the glass plate from below
- easy turning of large pages, (restriction for lowering for small books)
- continuously adjustable contact pressure
- sufficient leg room for fast and comfortable operation using foot pedal
- automatic lowering after capture

Technical specifications

Max. book size, opened:

1025 x 620 mm

(special model: 1025 x 700 mm)

Max. book weight: 20 kg

Max. book thickness: 240 mm

Working height: 800 mm

Electr. connection:

230V, 50/60 Hz, 150W,

other voltages on request

w x d x h: 1180 x 723 x 800 mm



OT 180 H 90°

Book cradle with swivel-mounted glass plate

- Book cradle with swivel-mounted glass plate for scanning without glass plate (larger opening angle).
- Optional with:
- automatic GP 0°/90° detection on PC
 - 71mm increase to 860mm
 - USB interface integrated into book cradle

Technical specifications

Max. book size, opened:

1025 x 620 mm

(special model: 1025 x 700 mm)

Max. book weight: 20 kg

Max. book thickness: 240 mm

Working height: 800 mm

Electr. connection:

230V, 50/60 Hz, 150W,

other voltages on request

w x d x h: 1180 x 723 x 800 mm



OT 180 H 50

Motorised book cradle with self-opening glass plate

- Copyboard system with book cradle for careful handling of books with self-opening glass plate for books up to 50 cm thick
- the book is opened 180° and pressed against the glass plate from below
- continuously adjustable contact pressure
- easy turning of large pages, (restriction for lowering for small books)
- sufficient leg room for fast and comfortable operation using foot pedal
- automatic lowering after capture

Technical specifications

Max. book size, opened:

1025 x 620 mm

(special model: 1025 x 700 mm)

Max. book weight: 40 kg

Max. book thickness: 500 mm

Working height: 900 mm

Electr. connection: 230 V, 50/60 Hz,

150W, other voltages on request

w x d x h: 1180 x 723 x 900 mm



OT 90

Book cradle for old, valuable books

- Copyboard system with book cradle for old, valuable books, which can be opened between 90° and 180°
- simple capture even deep into the book curve possible
- the book is gently held by placing into a book holder which slides sideways for single page capture of books
- absolute gentle handling of the books
- continuously adjustable contact pressure
- sufficient leg room for fast and comfortable operation using foot pedal
- automatic lowering after capture

Technical specifications

Max. book size, opened:

420 x 600 mm

Max. book weight: 20 kg

Max. book thickness: 200 mm

Working height: 800 mm

Electr. connection:

230V, 50/60 Hz, 150W,

other voltages on request

w x d x h: 1180 x 700 x 800 mm



ZT

Newspaper table with horizontally moveable table plate

- newspaper table with rail-guided, horizontally moveable table plate
- easily adjustable locks
- automatic release of capture on request
- suitable for capture of single newspaper pages

Technical specifications

Max. size of original, opened:

906 x 640mm

(special model: 1000 x 700mm)

Working height: 800mm

w x d x h: 1180 x 723 x 697 mm



AT 1

Top light table for opaque originals

- camera table for opaque originals (e.g. technical drawings, geographic maps)
- sturdy tubular steel construction

Technical specifications

Max. size of original, opened:

1070 x 675 mm

Working height: 800 mm

w x d x h: 1180 x 723 x 800 mm

The AT 1 is also available with glass plate

Other products can be
found on our homepage:
www.zeuschel.com

 **ZEUSCHEL**
The Future of the Past.



AT 0

Top light table for opaque originals

- camera table for opaque originals (e.g. technical drawings, geographic maps)
- sturdy tubular steel construction

Technical specifications

Max. size of original:

1350 x 960 mm

Working height: 800 mm

w x d x h: 1350 x 960 x 800 mm

The AT 0 is also available with glass plate



DT 0

Backlight table for opaque and transparent originals

- backlight table for opaque and transparent originals (e.g. technical drawings, geographic maps)
- optimum contrast and perfect density through uniform cold-light illumination
- continuously adjustable light intensity
- simple operation
- moveable, clearly-marked guide bar
- comfortable operation when sitting due to sufficient legroom
- vacuum system to hold down rolled or folded originals on request

Technical specifications

Max. size of original: 1350 x 960 mm

Working height: 800 mm

Electr. connection:

230V, 50/60 Hz, 85W,

other voltages on request

w x d x h: 1600 x 1100 x 800 mm

The DT 0 is also available with glass plate.



Vacuum table A0

Copyboard table for flat originals

- copyboard table for single-sheet originals
- study tubular steel construction on wheels
- continuously adjustable suction capacity

Technical specifications

Max. suction capacity: 270 l/min

Max. size of original: 877 x 1227mm

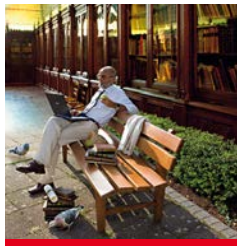
Working height: 900 mm

Electr. connection: 110-230V

w x d x h: 1550 x 1200 x 900 mm

If you are looking for a perfect solution for digitization and preservation of valuable cultural assets and documents, talk to us. For more than 50 years we have been managing all processes of document capturing, archiving, processing and provision of digital data with our analog and digital systems for scanning and microfilm technology at the highest level.

Our systems are used worldwide by renowned archives, libraries, universities, land registries as well as commercial enterprises and service providers.



The Future of the Past.



Zeutschel GmbH · Heerweg 2 · 72070 Tübingen
Tel.: +49 7071 9706-0 · Fax: +49 7071 9706-44
info@zeutschel.de · www.zeutschel.com